

LABOR- UND REINRAUMTECHNIK  
ARNSDORF GMBH



P  
R  
O  
D  
U  
C  
T  
C  
A  
T  
A  
L  
O  
G  
U  
E

2021



flexibility meets quality

For more than 50 years our customers in various laboratories in medicine, research and industry have benefited from the precision and reliability of our products, which have their origin in the medingen brand.



In July 2018, the sales and assembly capacity of the laboratory technology divisions was separated from VARIALUX GmbH and Rotter Reinstraumservice from GK Sondermaschinenbau GmbH and merged into **Labor- und Reinraumtechnik Arnsdorf GmbH**.

More than two decades of experience in medical technology and plant construction were thus bundled, engineering knowledge, experience and equipment in special machine construction were usefully networked. This has made it possible to expand our product portfolio with customer-specific variants, to optimise the processes from the quotation phase to delivery/acceptance and thus to meet our customers' requirements even better with individual solutions.

In the field of metalworking, GK Sondermaschinenbau GmbH and VARIALUX GmbH will remain important cooperation partners, so that we can also offer these services up to electrics and desired painting from one source. Translated with [www.DeepL.com/Translator](http://www.DeepL.com/Translator) (free version)

Quality  
„Made In Germany“

<b>Description</b>	<b>Page</b>
Water baths	4
Stainless steel water baths	5
Shaking water baths	6
Plastic water baths	7
Accessories for water baths	8
Immersion thermostats	9-10
Bath and thermostat combinations	11
Circulating thermostats	12
Bath Circulation Thermostat Combinations	13
Accessories for thermostats	14
Test tube racks	15
Cooling thermostats	16
Cold-Circulating thermostats	17
Circuit cooler/ tempering liquids	18

## Content

For all our water baths applies:

Via a digital LED display, in addition to setting the temperature in degrees Celsius or Fahrenheit, it is possible to set three programmable fixed times up to 99.59 minutes and a lower and upper set point limit.

Behind this is a microprocessor-controlled PID temperature regulation, which guarantees a temperature constancy of +/- 0.2 K and is equipped with an optical and/or acoustic limit value alarm (acoustic alarm can be switched off).

The dry-running protection integrated in the radiator and the production of our waterbaths according to DIN 12876 (safety class 1) guarantee you (when properly used with non-flammable liquids) the possibility of unattended operation.

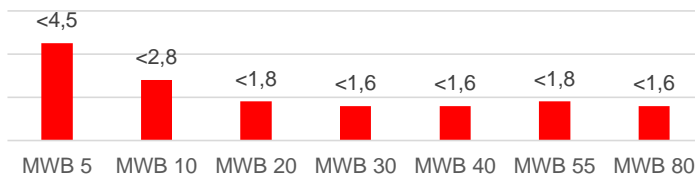
Furthermore, the bath container can be emptied very easily via the screw plug of the bottom outlet or an optional drain cock.

## Water baths

The stainless steel water baths of our MWB series are characterized by their proven ease of operation and high quality of materials and components. This results in functional and high-quality waterbaths that facilitate regular temperature control tasks in the laboratory and, thanks to their robust construction, can withstand continuous loads without any problems.



Heating time (20°C to 70°C) in min/l



## Stainless steel- Water baths

		MWB 5	MWB 10	MWB 20	MWB 30	MWB 40	MWB 55	MWB 80
Article- No.		A-10734	A-10735	A-10736	A-11139	A-10737	A-11140	A-10738
Heating time (20 to 70°C)	min/l	<4,5	<2,8	<1,8	<1,6	<1,6	<1,8	<1,6
Heat emission	W/h	<65	<80	<100	<115	<115	<125	<125
Bath volume	l	2 - 6	4 - 10	6 - 20	10 - 30	15 - 35	15 - 55	20 - 80
Bath opening	mm	215 x 230	390 x 230	455 x 230	480 x 340	845 x 230	680 x 350	620 x 420
Bath depth	mm	120	120	170	140	170	190	300
Heating capacity	KW	1,0	1,6	2,0	2,0	2,6	2,6	2,6
Dimensions (WxDxH)	mm	320 x 340 x 220	490 x 340 x 220	550 x 340 x 290	580 x 450 x 200	940 x 340 x 290	780 x 460 x 260	730 x 530 x 450
Net weight approx.	kg	7,5	10	12,5	17,5	21	25	33

- Working temperature range from +25 °C to 100 °C  
(permissible ambient temperature from +1°C to +40°C)
- Models with filling volumes from 2 to 80 liters
- Temperature constancy of +/- 0.2 K
- Heating capacity up to 2,6 kW



Our shaking water baths complement the range of our water baths and extend the process of tempering by moving the insert basket horizontally from gentle mixing to vigorous shaking.

		MSB 21
Article- No.		A-11118
Heating time (20 to 70°C)	min/l	<1,8
Heat emission	W/h	<100
Bath volume	l	5 - 20
Bath opening (basket)	mm	370 x 165
Bath depth	mm	150
Heating capacity	KW	2,0
Dimensions (WxDxH)	mm	630 x 340 x 300
Net weight approx.	kg	15

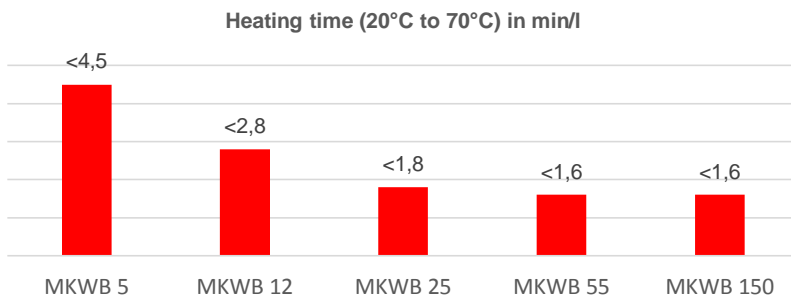


## Shaking- Water baths

- Working temperature range from +25 °C to 100 °C (permissible ambient temperature from +1°C to +40°C)
- Shaking frequency 20 to 200 per minute, continuously adjustable
- Shaking stroke 16 mm
- Bath volume 5 to 20 liters
- Temperature constancy of +/- 0.2 K
- Heating capacity up to 2,0 kW



Our waterbaths of the MKWB series made of polypropylene offer a very good thermal insulation. Due to the smooth surface and rounded inner edges, they are sterile to a high degree and are also produced in a space-saving single-walled design, without the risk of burns on the outer walls at higher temperatures. They are also more resistant to many acids.



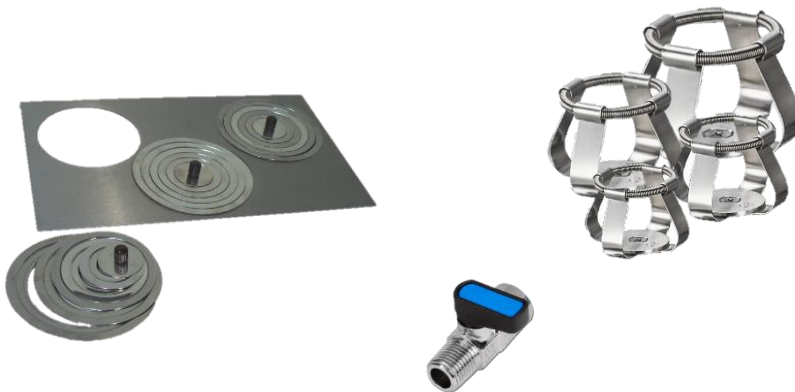
## Plastic- Water baths

		MKWB 5	MKWB 12	MKWB 25	MKWB 55	MKWB 150
Article- No.		A-12020	A-12021	A-12022	A-12023	A-12024
Heating time (20 to 70°C)	min/l	<4,5	<2,8	<1,8	<1,6	<1,6
Heat emission	W/h	<65	<80	<100	<115	<115
Bath volume	l	2 - 6	4 - 12	6 - 18	10 - 55	15 - 150
Bath opening	mm	215 x 230	390 x 230	455 x 230	680 x 350	900 x 560
Bath depth	mm	120	120	170	190	300
Heating capacity	KW	1,0	1,6	2,0	2,0	2,6
Dimensions (WxDxH)	mm	320 x 340 x 220	490 x 340 x 220	550 x 340 x 290	820 x 380 x 250	1.100 x 600 x 300

- Working temperature range from +25 °C to 90 °C (permissible ambient temperature from +1°C to +40°C)
- Models with filling volumes from 2 to 150 liters
- Temperature constancy of +/- 0.2 K
- Heating capacity up to 2,6 kW



With our range of accessories, the waterbaths can be used flexibly and equipped for the most diverse requirements.



## Accessories for Water baths

Article- No.	Type	Description / Features		usable for...
A -10743	FL 5-1	Flat cover 5, 1 Opening	D= 130mm	MWB 5
A -10744	FL 5-2	Flat cover 5, 2 Openings	D= 92mm	MWB 5
A -10745	FL 10-3	Flat cover 10, 3 Openings	D= 130mm	MWB 10
A -10746	FL 10-6	Flat cover 10, 6 Openings	D= 92mm	MWB 10
A -10747	FL 20-3	Flat cover 20, 3 Openings	D= 130mm	MWB 20
A -10748	FL 20-8	Flat cover 20, 8 Openings	D= 92mm	MWB 20
A -10749	WR 130	Water bath rings 6-teilig,	D= 130mm	MWB 5; FL 5 - 1; FL 10 - 3; FI 20 - 3
A -10750	WR 92	Water bath rings 4-teilig,	D= 92mm	FL 5 - 2; 10 - 6; 20 - 8
A -10752	AH	Drain cock, complete		MWB 5 bis MWB 80
K -14362	FK 10	Holding clip for Erlenmeyer flasks	10 ml	MSB 21
K -14363	FK 25	Holding clip for Erlenmeyer flasks	25 ml	MSB 21
K -14364	FK 50	Holding clip for Erlenmeyer flasks	50 ml	MSB 21
K -14365	FK 100	Holding clip for Erlenmeyer flasks	100 ml	MSB 21
K -14366	FK 250	Holding clip for Erlenmeyer flasks	250 ml	MSB 21
K -14367	FK 500	Holding clip for Erlenmeyer flasks	500 ml	MSB 21
K -14368	FK 1000	Holding clip for Erlenmeyer flasks	1000 ml	MSB 21



Our immersion thermostats range from the basic model for everyday routine tasks to the powerful top model for the most demanding requirements. They are manufactured according to DIN 12876 safety class 3.

- **proven technology**
- **Reliable**
- **easy handling**



## Immersion thermostats

		T 100	T 150
Article- No.		A-10772	A-10773
Working temperature range	°C	25 ... 100	25 ... 150
Working temperature range (with external cooling)	°C	-30 ... 100	-50 ... 150
Heating capacity	kW	1,0	1,8
Temperature display / resolution	K	LED / 0,1	LED / 0,1
Temperature setting / resolution	K	Digital / 0,1	Digital / 0,1
Power supply	V/Hz	230/50	230/50
Dimensions (WxDxH)	mm	120 x 130 x 330	120 x 130 x 335
Weight	kg	3	3

- Temperature constancy of +/- 0.1 K
- Pump with max. flow rate of 5 l/min
- Max. pressure of pump 0,12 bar
- Timer with alarm function, adjustable from 0 - 99,59 min
- Temperature controller: adjustable set point limitation
- Alarm switching



Our immersion thermostats can be used as single devices with clamp for the application on your existing bath vessels and...

- **high performance**
- **Accurate**
- **Energy saving**

## Immersion thermostats

		T 200
Article- No.		A-10775
Working temperature range	°C	25... 200⇒temporarily up to 250 °C
Working temperature range (with external cooling)	°C	-60... 200 ⇔temporarily up to 250 °C
Heating capacity	kW	1,8
Temperature display / resolution	K	digital on graphic display/ 0,1
Temperature setting / resolution	K	digital via touch panel/ 0,1
Power supply	V/Hz	230 / 50/60
Dimensions (WxDxH)	mm	120 x 130 x 335
Weight	kg	3
Interface		RS 232 (V.24)
Connection of external sensor		Connection socket (Pt 100 in four-wire circuit) at lower level of bath medium
Internal device monitoring with error message		in case of overtemperature
		in case of sensor error
		in case of electronic failure

- Temperature stability of +/- 0.01 K at 70 °C in water
- Pump with max. flow rate of 8 l/min
- max. pressure of pump 0,2 bar
- Calibration/ resolution: to "SET" temperature (standard 70 °C) / 0.1
- Programmer: 2 sets of 10 temperature-time segments each (process is time-related)



# Bath and thermostat combinations

... both in combination with our polycarbonate or stainless steel baths and in combination with our cooling units.

## with transparent plastic bath

without bath cover

Connection for external consumer and cooling coil



Article- No.	Type	Description
A-10776	PB4T100	4 Liter Polycarbonate bath with immersion thermostat T 100
A-10777	PB4T200	4 Liter Polycarbonate bath with immersion thermostat T 200
A-10778	PB6T100	6 Liter Polycarbonate bath with immersion thermostat T 100
A-10779	PB6T200	6 Liter Polycarbonate bath with immersion thermostat T 200
A-10780	PB8T100	8 Liter Polycarbonate bath with immersion thermostat T 100
A-10781	PB8T200	8 Liter Polycarbonate bath with immersion thermostat T 200
A-10782	PB10T100	10 Liter Polycarbonate bath with immersion thermostat T 100
A-10783	PB10T200	10 Liter Polycarbonate bath with immersion thermostat T 200
A-10784	PB12T100	12 Liter Polycarbonate bath with immersion thermostat T 100
A-10785	PB12T150	12 Liter Polycarbonate bath with immersion thermostat T 150
A-10786	PB12T200	12 Liter Polycarbonate bath with immersion thermostat T 200

## with stainless steel bath

complete with bath cover

Connection for external consumer and cooling coil



Article- No.	Type	Description / Feature
A-10787	ETB3T100	3 Liter Stainless steel bath with immersion thermostat T 100 Only for external tempering
A-10788	ETB3T150	3 Liter Stainless steel bath with immersion thermostat T 150 Only for external tempering
A-10789	ETB3T200	3 Liter Stainless steel bath with immersion thermostat T 200 Only for external tempering
A-10790	ETB5T100	5 Liter Stainless steel bath with immersion thermostat T 100
A-10791	ETB5T150	5 Liter Stainless steel bath with immersion thermostat T 150
A-10792	ETB5T200	5 Liter Stainless steel bath with immersion thermostat T 200
A-10793	EB7T100	7 Liter Stainless steel bath with immersion thermostat T 100
A-10794	EB7T150	7 Liter Stainless steel bath with immersion thermostat T 150
A-10795	EB7T200	7 Liter Stainless steel bath with immersion thermostat T 200
A-10796	EB13T100	13 Liter Stainless steel bath with immersion thermostat T 100
A-10797	EB13T150	13 Liter Stainless steel bath with immersion thermostat T 150
A-10798	EB13T200	13 Liter Stainless steel bath with immersion thermostat T 200
A-10799	EB18T100	18 Liter Stainless steel bath with immersion thermostat T 100
A-10800	EB18T150	18 Liter Stainless steel bath with immersion thermostat T 150
A-10801	EB18T200	18 Liter Stainless steel bath with immersion thermostat T 200
A-10802	EB23T100	23 Liter Stainless steel bath with immersion thermostat T 100
A-10803	EB23T150	23 Liter Stainless steel bath with immersion thermostat T 150
A-10804	EB23T200	23 Liter Stainless steel bath with immersion thermostat T 200

With their double pump, our circulators ensure fast and even temperature control of your bath medium. Whether for individual attachment by means of a bath bridge or a stand to your existing bath tank or ...

## Circulation-thermostats



		TC 150	TC 250
Article- No.		A-10805	A-10807
Working temperature range	°C	25 ... 150	25... 200⇒temporarily up to 250 °C
Working temperature range (with external cooling)	°C	-50 ...150	-60... 200 ⇒temporarily up to 250 °C
Temperature constancy	K	0,1	+/- 0.01 K at 70 °C in water
Pump - max. flow rate	l/min	5	8
Pump - max. pressure	bar	0,12	0,2
Temperature display / resolution	K	LED / 0,1	digital on graphic display/ 0,1
Temperature setting / resolution	K	Digital / 0,1	digital via touch panel/ 0,1
Timer with alarm function	min	0 - 99,99	-
Temperature control		adjustable Setpoint limitation and alarm circuit	-
Calibration / Resolution	K	-	to "SET" temperature ( standard 70 °C ) / 0,1
Programmer		-	2 sets of 10 temperature-time segments each (process is time-related)
Power supply	V/Hz	230/50	230 / 50/60
Dimensions (WxDxH)	mm	120 x 130 x 335	120 x 130 x 335
Weight	kg	3	3
Interface		-	RS 232 (V.24)
Connection external sensor		-	Connection socket (Pt 100 in four-wire circuit) at lower level of bath medium
Internal device monitoring with error message		-	in case of overtemperature
			in case of sensor error
			in case of electronic failure

- heating capacity of 1,8 kW
- Safety class 3 according to DIN 12876

... immediately in combination with our stainless steel baths or in combination with our cooling baths.



## Bath- Circulation thermostat- Combinations

complete with bath cover, connection for external consumer and cooling coil

Article No.	Type	Description / Feature
A-10808	EB7TC150	7 Liter Stainless steel bath with circulation thermostat TC 150
A-10809	EB7TC250	7 Liter Stainless steel bath with circulation thermostat TC 250
A-10810	EB13TC150	13 Liter Stainless steel bath with circulation thermostat TC 150
A-10811	EB13TC250	13 Liter Stainless steel bath with circulation thermostat TC 250
A-10812	EB18TC150	18 Liter Stainless steel bath with circulation thermostat TC 150
A-10813	EB18TC250	18 Liter Stainless steel bath with circulation thermostat TC 250
A-10814	EB23TC150	23 Liter Stainless steel bath with circulation thermostat TC 150
A-10815	EB23TC250	23 Liter Stainless steel bath with circulation thermostat TC 250

# Accessories for thermostats



## Stainless steel bath tanks (without bath lid)

Article- No.	Type	Description	usable bath opening (WxDxH)	usable for...
A –10816	ETB 3	3 Liter Stainless steel bath	nur externe Temperierung	all T – Thermostats
A –10817	ETB 5	5 Liter Stainless steel bath	115 x 115 x 150 mm	all T – Thermostats
A –10818	EB 7	7 Liter Stainless steel bath	230 x 75 x 150 mm	all T und TC – Thermostats
A –10819	EB 13	13 Liter Stainless steel bath	230 x 270 x 150 mm	all T und TC – Thermostats
A –10820	EB 18	18 Liter Stainless steel bath	230 x 270 x 200 mm	all T und TC – Thermostats
A –10821	EB 23	23 Liter Stainless steel bath	230 x 270 x 250 mm	all T und TC – Thermostats



## Polycarbonate bath tanks (without bath cover and support plate)

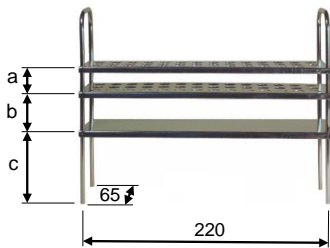
All polycarbonate baths max. +100°C.

Article- No.	Type	Description	usable bath opening (WxDxH)	usable for...
A –10852	PB 4	4 Liter Polycarbonate bath	140 x 70 x 145 mm	all T – Thermostats
A –10853	PB 6	6 Liter Polycarbonate bath	140 x 140 x 145 mm	all T – Thermostats
A –10854	PB 8	8 Liter Polycarbonate bath	140 x 210 x 145 mm	all T – Thermostats
A –10855	PB 10	10 Liter Polycarbonate bath	140 x 280 x 145 mm	all T – Thermostats
A –10856	PB 12	12 Liter Polycarbonate bath	140 x 350 x 145 mm	all T - Thermostats

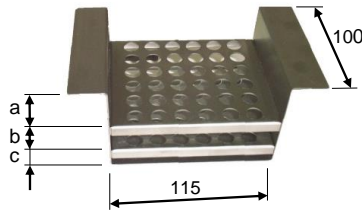
## Other accessories for bath thermostats

Article- No.	Type	Description / Features	usable for...
A –10752	AH	Drain cock	ETB3 bis EB23
A –10838	TF	Temperature sensor Pt100	T 200, TC 250
A –10839	BD 3	Bath cover 3	ETB 3
A –10840	BD 5	Bath cover 5	ETB 5
A –10841	BD 4-1	Bath cover 4-1	PB4 – PB12
A –10841	BD 4-2	Bath cover 4-2	PB6 – PB12
A –10842	BD 7	Bath cover 7	EB 7
A –10843	BD 13	Bath cover 13	EB13 – EB23
A –10844	KE 1	Cooling coil	T 100, T 150, T 200
A –10845	AS	Connection piece for external consumers	T 100, T 150, T 200
A –10846	BV	Adjustable stainless steel bridge	TC 150, TC 250
A –10847	ST	Adjustable stand	TC 150, TC 250
A –10849	SK	Interface cable	T 200, TC 250
A –10850	KL	Clamp	T 100, T 150, T 200
A –10851	HB	Adjustable lifting bottom	EB13 bis EB23

Our test tube racks can be designed variably.



Reagenzglasgestell  
für Wasserbäder MWB 5 - MWB 40



Reagenzglasgestell  
für Wasserbäder MWB 5 - MWB 40

## Test tube-racks

### for stainless steel bath tanks

Article- No.	Type	Rack dimension in mm			Recording of vessels		Maximum number of racks that can be used per unit		
		a	b	c	St.	max. Ø	EB 7	EB13	EB18
A -10827	RG 6.10,5	20	30	85	56	10,5	1	4	-
A -10828	RG 6.11,5	15	20	80	56	11,5	1	4	-
A -10829	RG 6.14,5	50	30	35	33	14,5	1	4	-
A -10830	RG 6.18,5	50	30	35	18	18,5	1	4	-
A -10831	RG 6.32	50	30	35	6	32	1	4	-
A -10832	RG 16.10,5	20	30	105	56	10,5	-	-	4
A -10833	RG 16.11,5	15	20	120	56	11,5	-	-	4
A -10834	RG 16.14,5	50	30	75	33	14,5	-	-	4
A -10835	RG 16.18,5	50	30	75	18	18,5	-	-	4
A -10836	RG 16.32	50	30	75	6	32	-	-	4

### for polycarbonate bath tanks

Article- No.	Type	Rack dimension in mm			Recording of vessels		Maximum number of racks that can be used per unit				
		a	b	c	St.	max. Ø	PB 4	PB 6	PB 8	PB 10	PB 12
A -11059	RGK 11	33	25	17	18	11,5	1	2	3	4	5
A -11061	RGK 13	48	25	17	18	13,5	1	2	3	4	5
A -11062	RGK 14	33	25	17	14	14,5	1	2	3	4	5
A -11063	RGK 18	33	25	17	10	18,5	1	2	3	4	5
A -11064	RGK 32	35	65	20	3	32	1	2	3	4	5

### for water baths MWB 5 - MWB 40

Article- No.	Type	Rack dimension in mm			Recording of vessels		Maximum number of racks that can be used per unit				
		a	b	c	St.	max. Ø	MWB 5	MWB 10	MWB 20	MWB 40	MSB 21
A -10759	RG 8.10,5	20	30	60	56	10,5	3	5	6	12	-
A -10760	RG 8.11,5	15	20	75	56	11,5	3	5	6	12	-
A -10761	RG 8.14,5	50	30	30	33	14,5	3	5	6	12	-
A -10762	RG 8.18,5	50	30	30	18	18,5	3	5	6	12	-
A -10763	RG 8.28	50	30	30	8	28	3	5	6	12	-
A -10764	RG 8.32	50	30	30	6	32	3	5	6	12	-
A -10765	RG 8.49	30	30	30	3	49	3	5	6	12	-
A -10766	RG 8.58	60	30	30	3	58	3	5	6	12	-
A -10767	RG 11,5	33	25	17	36	11,5	-	-	-	-	4
A -10768	RG 13,5	48	25	17	36	13,5	-	-	-	-	4
A-100769	RG 14,5	33	25	14	25	14,5	-	-	-	-	4
A -10770	RG18,5	33	25	17	20	18,5	-	-	-	-	4
A -10771	RG 32	35	65	20	5	32	-	-	-	-	4

Our cooling thermostats range from the compact table-top unit with a 3-liter bath volume to the large-volume floor-mounted unit with a powerful refrigerating machine with a working temperature range down to -75°C. The intelligent refrigeration control ensures an energy-saving mode of operation.



## Cooling-thermostats

### Table top devices

Article No.	Type	Temp.-range	Temp.-constancy	Cooling capacity in W		Pump capacity		Bath-volume in l	Bath-opening B x T x BT mm
				bei 0°C	bei 15°C	l/min	bar		
A-10857	K10 T100	-10...+100°C	±0,1 K	130	200	5	0,12	3	135x105x130
A-10858	K10 T200	-10...+100°C	±0,01 K	130	200	8	0,2	3	135x105x130
A-10859	K21 T100	-20...+100°C	±0,1 K	425	700	5	0,12	8	235x165x150
A-10861	K21 T200	-20...+200°C	±0,01 K	425	700	8	0,2	8	235x165x150
A-10865	K22 T100	-20...+100°C	±0,1 K	425	700	5	0,12	10	235x165x200
A-10867	K22 T200	-20...+200°C	±0,01 K	425	700	8	0,2	10	235x165x200
A-10871	K31 T100	-30...+100°C	±0,1 K	500	750	5	0,12	11	300x190x150
A-10873	K31 T200	-30...+200°C	±0,01 K	500	750	8	0,2	11	300x190x150
A-10877	K32 T100	-30...+100°C	±0,1 K	500	750	5	0,12	15	300x190x200
A-10879	K32 T200	-30...+200°C	±0,01 K	500	750	8	0,2	15	300x190x200

### Freestanding devices

Article No.	Type	Temp.-range	Temp.-constancy	Cooling capacity in W		Pump capacity		Bath-volume in l	Bath-opening B x T x BT mm
				bei 0°C	bei 15°C	l/min	bar		
A-10907	KB10 T100	-10...+100°C	±0,1 K	400	750	5	0,12	22	230x270x250
A-10909	KB10 T200	-10...+200°C	±0,01 K	400	750	8	0,2	22	230x270x250
A-10913	KB30 T150	-30...+100°C	±0,1 K	500	750	5	0,12	22	230x270x250
A-10915	KB30 T200	-30...+200°C	±0,01 K	500	750	8	0,2	22	230x270x250
A-10919	KB40 T150	-40...+100°C	±0,1 K	700	1000	5	0,12	22	230x270x250
A-10921	KB40 T200	-40...+200°C	±0,01 K	700	1000	8	0,2	22	230x270x250
A-10925	KB55 T150	-55...+100°C	±0,1 K	950	1000	5	0,12	22	230x270x250
A-10927	KB55 T200	-55...+200°C	±0,01 K	950	1000	8	0,2	22	230x270x250
A-10931	KB75 T150	-75...+100°C	±0,1 K	800	900	5	0,12	12	230x180x150
A-10933	KB75 T200	-75...+200°C	±0,01 K	800	900	8	0,2	12	230x180x150



Our cold-circulating thermostats complement our range of cooling thermostats in their proven mode of operation and, with their double pump, ensure even faster and more precise temperature control of your bath medium. And here too, you will find intelligent refrigeration control for energy-saving operation.



## Cold - Circulating thermostats

### Table top devices

Article No.	Type	Temp.- range	Temp.- constancy	Cooling capacity in W		Pump capacity		Bath- volume in l	Bath- opening B x T x BT mm
				bei 0°C	bei 15°C	l/min	bar		
A-10862	K21 TC150	-20...+100°C	±0,1 K	425	700	20 / 18	0,3 / 0,2	8	235x165x150
A-10864	K21 TC250	-20...+200°C	±0,01 K	425	700	20 / 18	0,3 / 0,2	8	235x165x150
A-10868	K22 TC150	-20...+100°C	±0,1 K	425	700	20 / 18	0,3 / 0,2	10	235x165x200
A-10870	K22 TC250	-20...+200°C	±0,01 K	425	700	20 / 18	0,3 / 0,2	10	235x165x200
A-10874	K31 TC150	-30...+100°C	±0,1 K	500	750	20 / 18	0,3 / 0,2	11	300x190x150
A-10876	K31 TC250	-30...+200°C	±0,01 K	500	750	20 / 18	0,3 / 0,2	11	300x190x150
A-10880	K32 TC150	-30...+100°C	±0,1 K	500	750	20 / 18	0,3 / 0,2	15	300x190x200
A-10882	K32 TC250	-30...+200°C	±0,01 K	500	750	20 / 18	0,3 / 0,2	15	300x190x200

### Freestanding devices

Article No.	Type	Temp.- range	Temp.- constancy	Cooling capacity in W		Pump capacity		Bath- volume in l	Bath- opening B x T x BT mm
				bei 0°C	bei 15°C	l/min	bar		
A-10910	KB10 TC150	-10...+100°C	±0,1 K	400	750	20 / 18	0,3 / 0,2	22	230x270x250
A-10912	KB10 TC250	-10...+200°C	±0,01 K	400	750	20 / 18	0,3 / 0,2	22	230x270x250
A-10916	KB30 TC150	-30...+100°C	±0,1 K	500	750	20 / 18	0,3 / 0,2	22	230x270x250
A-10918	KB30 TC250	-30...+200°C	±0,01 K	500	750	20 / 18	0,3 / 0,2	22	230x270x250
A-10922	KB40 TC150	-40...+100°C	±0,1 K	700	1000	20 / 18	0,3 / 0,2	22	230x270x250
A-10924	KB40 TC250	-40...+200°C	±0,01 K	700	1000	20 / 18	0,3 / 0,2	22	230x270x250
A-10928	KB55 TC150	-55...+100°C	±0,1 K	950	1000	20 / 18	0,3 / 0,2	22	230x270x250
A-10930	KB55 TC250	-55...+200°C	±0,01 K	950	1000	20 / 18	0,3 / 0,2	22	230x270x250
A-10934	KB75 TC150	-75...+100°C	±0,1 K	800	900	20 / 18	0,3 / 0,2	12	230x180x150
A-10936	KB75 TC250	-75...+200°C	±0,01 K	800	900	20 / 18	0,3 / 0,2	12	230x180x150



## Circuit cooler

Article No.	Type	Temp.-range	Cooling capacity in W		Dimensions (W x D x H)	Weight	Pump l/min / bar
			bei 0 °C	bei 15 °C			
<b>Circuit cooler KK with digital temperature display and adjustment, temperature constancy ± 0.5 K</b>							
K-14340	KK 4-TBE	-10 ... +40°C	200	400	280 x 360 x 520	ca. 27 kg	18 / 0,5
K-14341	KK 6-TBE	-10 ... +40°C	300	600	280 x 360 x 520	ca. 28,5 kg	18 / 0,5
K-14342	KK 8-TBE	-10 ... +40°C	420	800	280 x 360 x 520	ca. 30 kg	18 / 0,5
<b>Circuit cooler KK with digital temperature display and adjustment, temperature constancy ± 0.2 K</b>							
K-14343	KK 6-TBC	-10 ... +40°C	300	600	280 x 360 x 520	ca. 28,5 kg	18 / 0,5
K-14344	KK 8-TBC	-10 ... +40°C	420	800	280 x 360 x 520	ca. 30 kg	18 / 0,5
<b>Circuit cooler KK with digital temperature display and adjustment, temperature constancy ± 0.5 K</b>							
K-14345	KK 6	-10 ... +40°C	300	600	400 x 450 x 570	ca. 45 kg	30 / 0,6
K-14346	KK 8	-10 ... +40°C	420	800	400 x 450 x 570	ca. 45 kg	30 / 0,6
K-14347	KK 10	-10 ... +40°C	500	1000	400 x 450 x 570	ca. 47 kg	30 / 0,6
K-14348	KK 12	-10 ... +40°C	550	1200	400 x 450 x 570	ca. 49 kg	30 / 0,6
K-14349	KK 14	-10 ... +40°C	600	1400	400 x 450 x 570	ca. 51 kg	30 / 0,6
K-14350	KK 20	-10 ... +40°C	800	2000	550 x 450 x 1100	ca. 65kg	12 / 3,0
K-14351	KK 25	-10 ... +40°C	1000	2500	550 x 450 x 1100	ca. 72kg	12 / 3,0
K-14352	KK 30	-10 ... +40°C	1250	3000	550 x 450 x 1100	ca. 80kg	12 / 3,0
K-14353	KK 40	-10 ... +40°C	1600	4000	550 x 450 x 1100	ca. 95kg	12 / 3,0
K-14354	KK 60	-10 ... +40°C	2400	6000	550 x 450 x 1100	ca. 120 kg	12 / 3,0
K-14355	KK 80	-10 ... +40°C	3300	8000	800x1000x1600	ca. 165kg	25 / 4,0
K-14356	KK 100	-10 ... +40°C	3800	10000	800 x 1000 x 1600	ca. 225kg	25 / 4,0

- other pump capacities available on request
- Mains voltage up to KK 20: 230 V, from KK 30: 400 V
- Special accessories from KK 20: heating with 2.0 kW remote control, differential temperature control

## Tempering liquids

Article No.	Type	Description / Feature
K-14357	TF 30	Tempering liquid -30°C to + 85°C
K-14358	TF 60	Tempering liquid -60°C to + 5°C
K-14359	TF 100	Tempering liquid -40°C to +100°C
K-14360	TF 140	Tempering liquid 0°C to +140°C
K-14361	TF 250	Tempering liquid -30°C to +250°C

- Are you interested in further products and services from us?
- Do you have your own product ideas that you want to realize together with us?

**Please contact us**

 **+49 35200 2818 0**

**or**

**write to us**

**[info@lrt-arnsdorf.de](mailto:info@lrt-arnsdorf.de)**

**We are happy to help you and  
find your solution!**

Valid from 01.01.2021. Subject to change.