

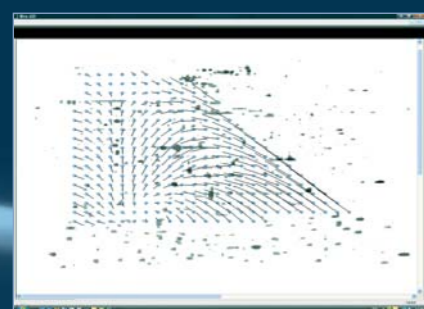


## VILBER BIO-2D

A new dimension for your 2D sample

Bio-2D is a unique software for the analysis of 2-D gels. Fast and accurate analysis are just a few clicks away. Bio-2D associates the power of a build-in database and a comprehensive set of analytical tools. The database search engine provides immediate matching results, controlled by customisable parameters.

Bio-2D is the perfect solution to complete your Vilber 1D package.



Detect

Store

Characterized

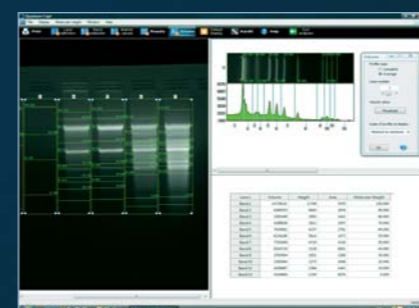


## VILBER THE CAPT SERIES

Fast, accurate and easy to use solution

All our systems are supplied with a complimentary software to perform analysis such as molecular weight, band quantification, colony counting and distance calculation. It also includes image enhancement features to enable editing of comments, inversion, contrast / brightness adjustment as well as colorimetry.

Designed by molecular biologists, our softwares are intuitive and very easy to use: just few clicks are necessary to obtain sophisticated results.



Fast

Accurate

Easy to use

### > SPECIFICATIONS

#### Detection and scale adjustment

- Subtract the background by deconvolution approach
- Recognize the contour by local contrast method
- Display volume, gravity centre, maximum intensity, height, circularity and eccentricity for each detected spot

#### Database and comparison

- Store unlimited number of samples in a flexible data-base
- Store each image with its M.W. / pI information
- Compare the currently analyzed image with the database's images
- Protect your data with a password for each user
- Identify each sample with a specific name and a reference for the initial image

- Adjust the distortion between several images (triangulation)
- Display matching and non matching spots
- Visualize the spot movement
- Recalibrate the gels to take into account the differences of staining or exposure time
- Protect your data with a password for each user

#### Molecular weight and pI point calculation

- Calculate M.W. and Isoelectric point for each spot according to the scales defined by the user
- Define values for M.W. / pI markers
- Display the marker curve

### > SPECIFICATIONS

#### Image acquisition

(Infinity-Capt for the Infinity system, Quantum-Capt for the Quantum ST4 system, Bio-Capt for the Bio-Print system)

- Real time mode
- GLP compliance
- Positive or negative image acquisition
- Grid display for easy horizontal and vertical gel positioning
- Pixel by pixel saturation warning display while acquiring the image
- Gray-scale monitoring while acquiring the image
- User's personal configuration file for easy saving and loading of his/her personal image acquisition parameters
- Printing on a thermal video printer or on the default desktop printer

#### Analysis

(All previous .Capt software and E-Capt for E-Box system, Photo-Capt for the Doc-Print system)

- Lane profile display
- Molecular weight or pH (IEF) value calculation
- Marker's migration curve display and adjustment
- Volume, height and area calculation
- Colony counting

#### Image enhancement

(All .Capt software)

- Editing of comments and symbols
- Date, time or image name stamping
- Image inversion
- Brightness and contrast adjustment
- 90-degree clockwise rotation
- GLP compliance
- Horizontal or vertical mirroring
- Automatic band detection