



# VILBER BIO-GENE

The advanced answer for 1D-lane data-basing

Bio-Gene is a powerful software package for the comparison of 1D lanes from multiple gel samples.

Based on a flexible database and a very intuitive interface, Bio-Gene allows the fast and accurate search of lane homologies. The lane data are stored in a built-in database. This allows direct comparison of lanes data, without an image calibration process. The database is a powerful tool for organising, storing and retrieving your image data in a very easy to use environment.

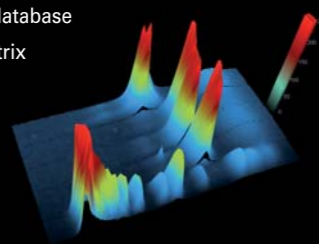
Bio-Gene can be used for any 1-D fluorescence or chemiluminescence samples.

Detect  
Analyse  
**Store and sort**  
Publish



## > SOFTWARE MODULES

- Molecular weight
- Identification of a lane from a database
- Band matching rectangular matrix
- Matrix / Dendrogram
- Multiprobe analysis
- Database management
- Image enhancement
- Result publishing



## > SCREENSHOTS



## > REFERENCE LIST

- Institute for Genetics and Bioinformatics / University of New England (Armidale, Australia)
- Xishuangbanna Tropical Botanical Garden, (Chinese Academy of Sciences, Menglun, China)
- INRA - Institut National de Recherche Agronomique (Clermont Ferrand, France)
- Department of Biology, Izmir Institute of Technology (Izmir, Turkey)

## > TESTIMONIALS

“ The Bio-Gene software helps us to compare hundred of samples at a glance. The cluster analysis is based on sophisticated and flexible algorithms. Just few clicks are necessary to get the results and to edit a report. The database is easily controlled through a very intuitive interface. We are always just few clicks from the results. ”

